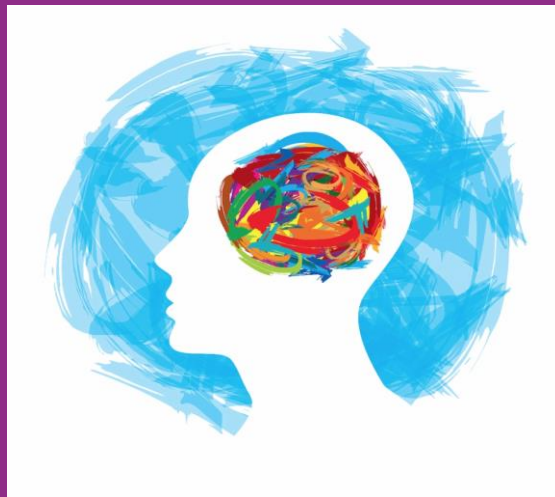


FACES™

Parent 2 Parent @ FACES

Parent 2 Parent @ FACES is a brand new parent led support group for anyone supporting a child or young person who is experiencing mental health difficulties.



Parent 2 Parent is a safe, supportive group which provides an opportunity to be with other parents living with similar experiences.

The group is informal, confidential and there is no pressure to share. Come along for a cuppa and be amongst other parents who 'get it'.

First session is on Monday 2nd December 10am-12pm
At Church Lane Community Centre.

For more information, please see contact details below.

The Centre, 147 Church Lane, Bedford, MK41 0PW
T 01234 270601
E office@facesbedford.org
W www.facesbedford.org

Charity Registration No. 1108574
Registered in England and Wales No: 05372026



**The Queen's Award
for Voluntary Service**