



Welcome to Monkey Puzzle

Information to support the working partnership of home and school.



Mrs Sarah Sears – Assistant Headteacher Year 5

Ms Jo Davage – Holly Class

Miss Hazel Burt – Coconut Class

From the smallest seeds to the tallest trees, always aiming higher: "Give, Grow & Aspire"



School Priorities for 2023 -2024



Highest levels of achievement:

Priority 1: Improve progress, so an increasing number of pupils achieve the expected and exceeding standards in each of reading, writing and maths.

Improve attainment, so that by the end of Y6, the proportion of pupils achieving the expected and higher standards in each of reading, writing and maths are above the national average within five years.

Highly effective preparation for the future:

Priority 2: To develop Pupil Voice & Pupil Leadership skills further so that the whole school commitment and actions to diversity, sustainability and climate change are heightened.

Highest levels of well-being and involvement:

Priority 3: Strengthen and develop the expertise of all staff, in order to recognise and remove/mitigate barriers to learning (inc. those caused by SEND, poverty or mental health issues), so that all children are fully engaged and focused on their learning at all times for all groups.

Highly effective family and community engagement:

Priority 4: To re-establish the strong parental engagement across the school from pre pandemic.

From the smallest seeds to the tallest trees, always aiming higher: "Give, Grow & Aspire"



The Curriculum at GGA

We deliver a broad and balanced curriculum using:

- A thematic and holistic approach
- Wide range of enrichment opportunities
- School values at the heart and our commitment to inclusion and diversity
- Specialist teachers for Music, French, PE



From the smallest seeds to the tallest trees, always aiming higher: "Give, Grow & Aspire"

DAY	8:30 – 8.45	9.00 – 9.30 30 mins	9.30 – 9.55	10:00 – 10:20	10:20 – 10:50 30 mins	11.00 – 12:00 1hr	12:00 – 1:00	1:00 – 3.00 pm					
MONDAY	New weekly spelling	Writing + GPS	Singing Assembly	PLAYTIME	Reading Comprehension	Maths + Basic Skills	LUNCHTIME	1:05 – 1:40 SS - PSHE		1.40- 2.15 pm HB - RE	2.15 pm – 2.55 pm JD - Art/DT		
TUESDAY	GPS quadrant	Writing + GPS		PLAYTIME	Reading Comprehension	Maths + Basic Skills		PPA					
WEDNESDAY	GPS quadrant	Writing + GPS		PLAYTIME	Reading Comprehension	Maths + Basic Skills		1:05 – 1:40 HB - Computing		1:40 – 2:15 AS - French	2:15 – 2:50 LM - Music	Pm - Forest School JD	
THURSDAY	GPS quadrant	Writing + GPS		PLAYTIME	Reading Comprehension	Maths + Weekly Mental Arithmetic Test		Science				2:40 Collective Worship/Singing Assembly	
FRIDAY	8.30 /9.00 Whole school parent Reading	Writing + GPS		PLAYTIME	Reading Comprehension	Maths + Basic Skills		Weekly Spelling Test	Topic History/Geography/DT/ART				



Curriculum Overview for Year 5

	Autumn	Spring	Summer
Maths	Place Value Addition & Subtraction Division & Multiplication Fractions	Division & Multiplication Fractions Decimals & Percentages Perimeter & Area Statistics	Shape, position & direction Decimals Converting Units Negative Numbers Volume
Eng			
Sci	Living things & their habitats	Space- rockets (experiments)	Properties & Change of materials
Topic	Victorians	Space	The Mayans
PSHE	Values, Peer Pressure Anti Bullying Week	Values, Inclusion & Acceptance Smoking, Anger & Puberty	Values and Enterprise Looking out for others.
RE	Inspiring leaders Islam Faith	How do Christians decide how to live?	Respect our Community Consider different versions of God.
PIXL	<ul style="list-style-type: none"> • Weekly meetings to discuss individual pupil progress • National tutoring programme • Termly PIXL assessments 		
HWork	<ul style="list-style-type: none"> • Weekly Spellings (10) – test on a Friday. • Week 1 – Maths • Week 2 – English (Grammar + Reading Comprehension) • Completed on the Google Classroom + Homework Club on a Friday • Daily Reading expectation and recording in HSB 		





Tracking Progress - Assessment



- Each child's progress is tracked against the national standards.
- This enables your child to clearly see next steps in their learning.
- If at any time you would like to speak to me about your child's progress please do not hesitate to contact the school office or me directly to make a mutually convenient appointment.
- You will be invited to attend at least two formal parent consultation meetings during the course of the school year. At these meetings I will talk through your child's progress and achievement.
- You will be given a record to take home showing the progress your child is making.
- Please email if you have any questions regarding your child's individual progress

From the smallest seeds to the tallest trees, always aiming higher: "Give, Grow & Aspire"



Attendance



- The expected attendance for Goldington Green Academy is 96% or more.
- Data shows that children achieve well at the end of the Year 6 and beyond , have had lower levels of absences.

100 – 97%	96-95.9%	94.9-93%	92.9-90%	89.9-0%
365 days in a year				
190 days in a school year to support children to maintain and even exceed expected attainment levels				
175 days for other activities like holidays, appointments, etc.				
90% equals having a day off every other week. (Would you be happy to lose a day's wages or benefits every other week?)				
Excellent	Good	Fairly Good	Poor	Extremely Poor
In a better position to understand what is being taught	More effort needed to catch upon lost sessions	Starting to struggle to stay in line with peers	Feeling a bit lost in lessons. Support needed	Totally lost. Struggling and feeling despondent
Can be supported at the right level	Light support required to bring back to expected level	Starts falling behind peers	With extra support may still struggle to keep on target	Even with intense support may miss targets



Uniform

- To support your child in being ready for learning at school please can you make sure that correct school uniform is worn including the black school shoes (not trainers)
- Jewellery must not be worn on PE or swimming days for Health & Safety reasons.
- Our PE day is **Tuesday**

From the smallest seeds to the tallest trees, always aiming higher; "Give, Grow & Aspire"



Homework

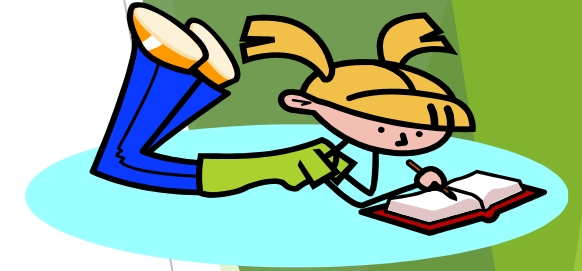


- Homework is designed to consolidate what your child has been learning in class.
- Homework is set in the Google Classroom – children can complete the work on paper and upload
- Homework is set on Friday afternoon and is due the following Friday morning at 8.00 am
- Your child will have: Week 1 – Reading Comprehension Week 2 – Grammar & Maths

From the smallest seeds to the tallest trees, always aiming higher; "Give, Grow & Aspire"



Reading Books



- Reading books will be matched to your child's reading ability.
- It is important your child can read and understand the vocabulary in the book as well as be able to discuss the book with an adult and answer questions to demonstrate their understanding of what they have read.
- Your child will be able to change their reading book as often as necessary. Please comment/sign their reading diary and ensure it is brought to school everyday.
- If they read 5 times in a week they will receive a score which will lead to Reading Certificates, badges and medals throughout the year.
- **Every Friday morning Parents are invited in at 8.30 am to come and read with your child for 30 minutes.**



Our Values Education



We are a values driven school and each month your child will build upon prior learning about the 'Value of the Month' September's value of the month is 'Responsibility'

Children are expected to follow school rules as well as the classroom and playground codes of conduct.

Children are rewarded in a variety of ways including:

- Golden Well done book
- House point system
- Stickers and in class incentives
- Positive news slips and communication home.

If poor choices are made by your child we will follow the school's behaviour policy and use 'Restorative Practice' to ensure your child reflects upon their actions to ensure the behaviour is not repeated.

From the smallest seeds to the tallest trees, always aiming higher; "Give, Grow & Aspire"



Our Values Education



We are a values driven school and each month your child will build upon prior learning about the 'Value of the Month' September's value of the month is 'Responsibility'

Children are expected to follow school rules as well as the classroom and playground codes of conduct.

Children are rewarded in a variety of ways including:

- Golden Well done book
- House point system
- Stickers and in class incentives
- Positive news slips and communication home.

If poor choices are made by your child we will follow the school's behaviour policy and use 'Restorative Practice' to ensure your child reflects upon their actions to ensure the behaviour is not repeated.

From the smallest seeds to the tallest trees, always aiming higher; "Give, Grow & Aspire"



Partnership



Thank you for coming to day and we have an open door policy so please come and see us, email, phone or write in the Home School Book.

We are looking forward to working with you over this Academic year to ensure your child is happy at school and achieve the best they can.

From the smallest seeds to the tallest trees, always aiming higher; "Give, Grow & Aspire"