

Luton & Bedfordshire



SEND Health Focus Week June 2023

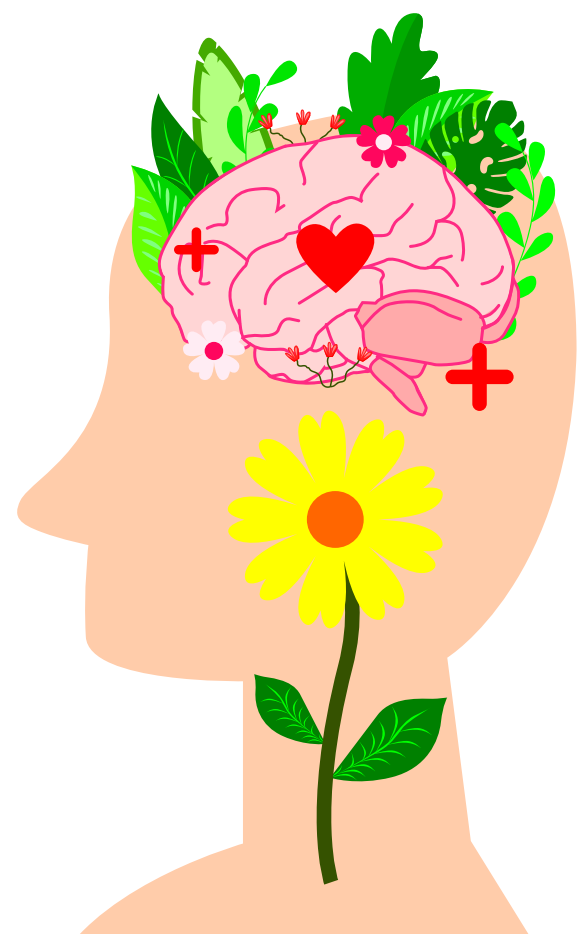
For parents, carers and professionals

Talks including...

- All About ADHD
- SEND & Dietetics
- Young Peoples Transitions to Adult Services
- The Positives of Neurodiversity
- Supporting Learning With SEND
- Autism in Girls
- SEND, Neurodiversity & Managing puberty

To find out more
visit our website

bit.ly/SENDweek23





Luton & Bedfordshire

SEND Health Focus Week June 2023

For parents, carers and professionals

TOPIC	Day	time	Link
ADHD and Medication	Friday 9th June	11am - 12.30pm	Click here
Making Mealtimes Manageable	Friday 9th June	1 - 2pm	Click here
Young People's Transitions into Adult Services	Monday 12th June	10 - 11.30am	Click here
Supporting Learning With SEND	Monday 12th June	1 - 2.30pm	Click here
The Positives of Neurodiversity	Wednesday 14th June	10 - 11.30am	Click here
SEND, Neurodiversity & Managing Puberty	Thursday 15th June	10 - 11.30am	Click here